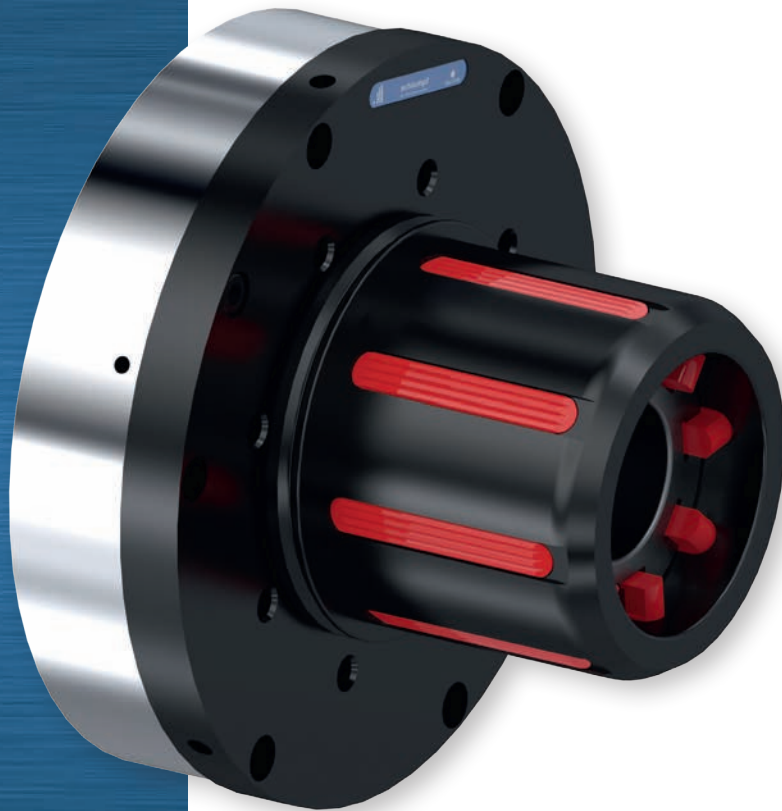


Technical information

SDE Core Chucks



Easy-Service-Concept
Service on the machine
within 5 minutes

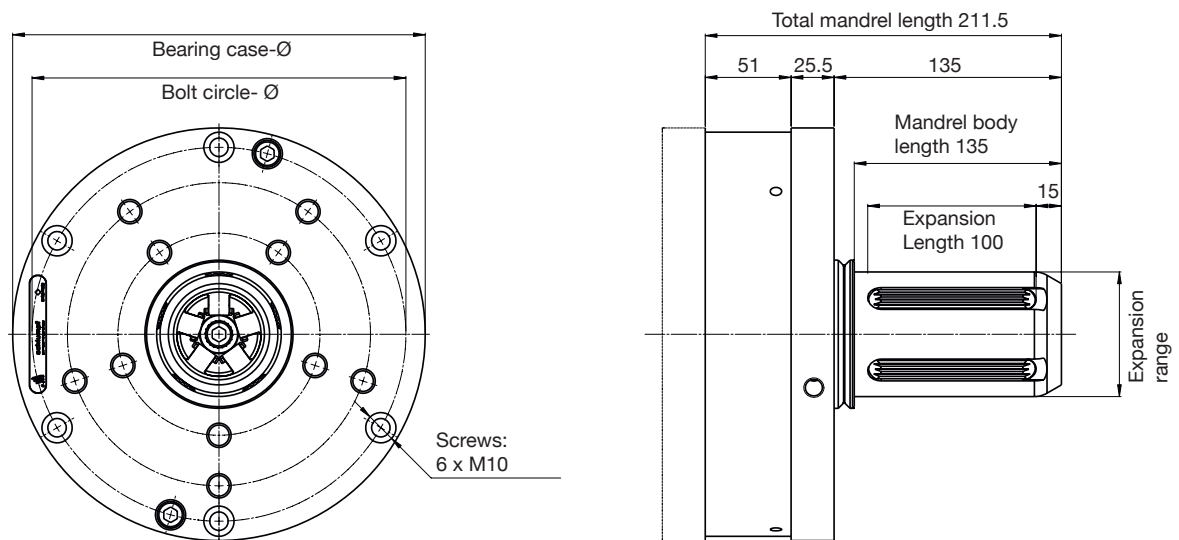
Quick changeover times
other core diameters
with plug-on adapters

Swiss precision

SDE Core Chucks

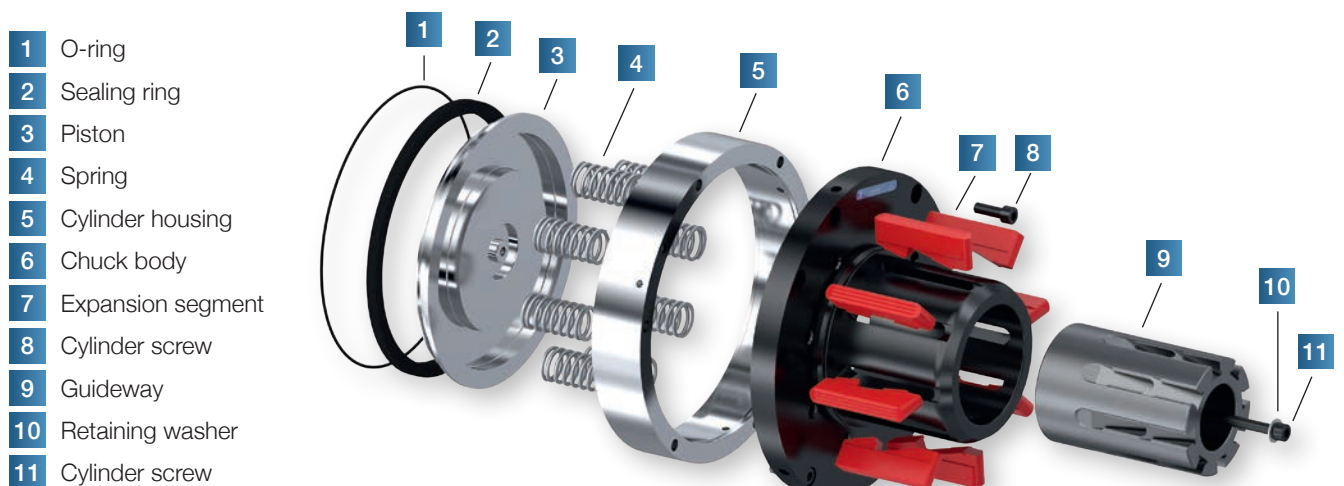
SDE Core Chucks are actuated by compressed air via an integrated piston. They clamp the core precisely in the center without slipping thanks to a large expansion range.

Maximum productivity thanks to minimal changeover and maintenance times.



Core Chuck

Type	SDE 20			SDE 25			Easy-Service-Concept
Internal core ø mm	70	3"	6"	70	3"	6"	Thanks to the <i>Easy-Service-Concept</i> , normal cleaning and maintenance work is carried out from the outside without removal of the Core Chuck from the machine.
Expansion range mm	69-80	74-85	148-159	69-80	74-85	148-159	
max. Load per Mandrel N	12'500	20'000	20'000	17'500	25'000	30'000	
Torque Nm MT/POM Profile	300	430	860	450	600	1360	
Torque Nm RP Profile	520	720	1520	680	1140	2580	
Operating pressure bar	6			6			
Bearing case mm	245			295			
Bolt circle ø mm	222			274			
Service option	Front dismantling <i>Easy-Service-Concept</i>						

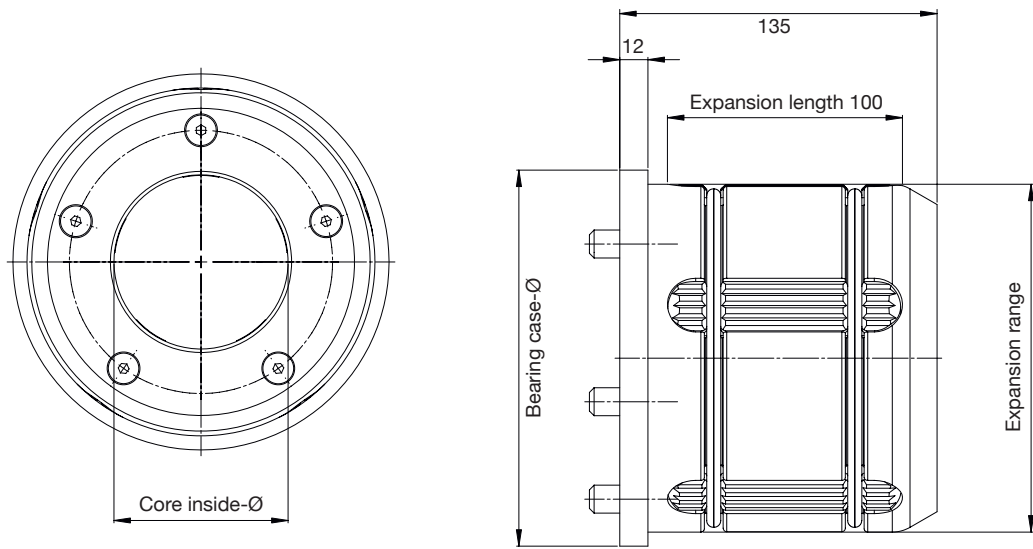


Expansion segment to SDE Core Chuck

	MT POM	MT Steel	RP Steel	LT Steel	PUR Steel	LBS POM	2K
Core material:	MT POM	MT Steel	RP Steel	LT Steel	PUR Steel	LBS POM	2K
Cardboard	x	x	x	x		x	
Plastic	x	x	x	x	x	x	x
Steel	x	x			x		x

Adapter






SDE Core Chucks can be quickly applied to other core diameters by means of plug-on adapters between 70 mm and over 300 mm (3"-12") converted. Highest productivity thanks to precise winding of the roller with minimal changeover and maintenance times.



Adapter

for the following SDE	SDE 20			SDE 25		
Core inner ø from Core Chuck mm	70	3"	6"	70	3"	6"
Expansion range adapter mm	148-158	148-158	298-308	148-158	148-158	298-308
Bearing case mm	160		312	160		312
Bolt circle ø mm	120		190	120		190



Expansion segment to adapter					
					
Core material:	MT Steel	RP Steel	LT Steel	PUR Steel	2K
Cardboard	x	x	x		
Plastic	x	x	x	x	x
Steel	x		x	x	x

More SDE Core Chucks

SDE with an external actuating cylinder (EXA)

Pneumatic- Mechanical actuation

- high torque with a small winding part
- Mechanical actuation by means of external actuation cylinder



SDE SF Core Chuck

Mechanically actuated

- Operational safety by spring tension
- minimal conversion and maintenance times *Easy-Service-Concept*
- can be changed with Adapter to any core diameter



Mechanical Core Chuck

Mechanically actuated

- Mechanically centric expansion of the expansion segments
- manual expanding and release



SDE with integrated switching ring

Pneumatic- Mechanical actuation

- Automation by core position detection
- compact



SDE switching ring

- Automation by core position detection
- used for all SDE Core Chucks



Schlumpf AG
Aahusweg 8
6403 Küssnacht am Rigi
Switzerland

Schlumpf GmbH
Eichstetter Strasse 55c
79232 March
Germany

Phone +41 41 784 43 43
Fax +41 41 784 43 44
info@schlumpf-ag.com
www.schlumpf-ag.com