

Technical information

SDJ Core Chucks



Easy-Service-Concept
Service on the machine
within 5 minutes

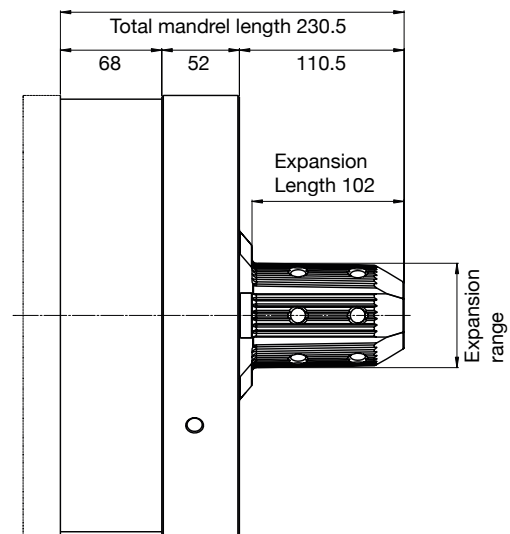
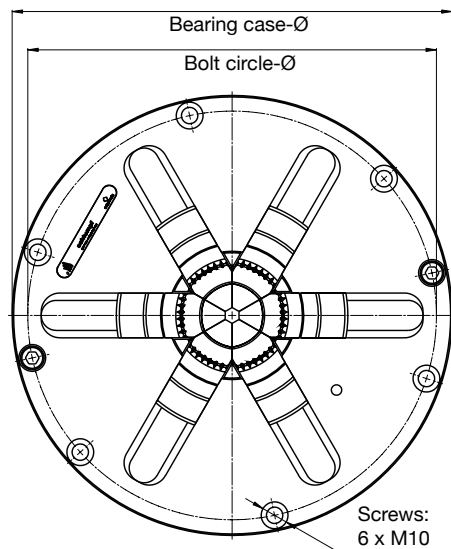
Large expansion range

Swiss precision

SDJ Core Chucks

SDJ Core Chucks are actuated by compressed air via an integrated piston. They clamp the core exactly in the center and have an incomparably large expansion range.

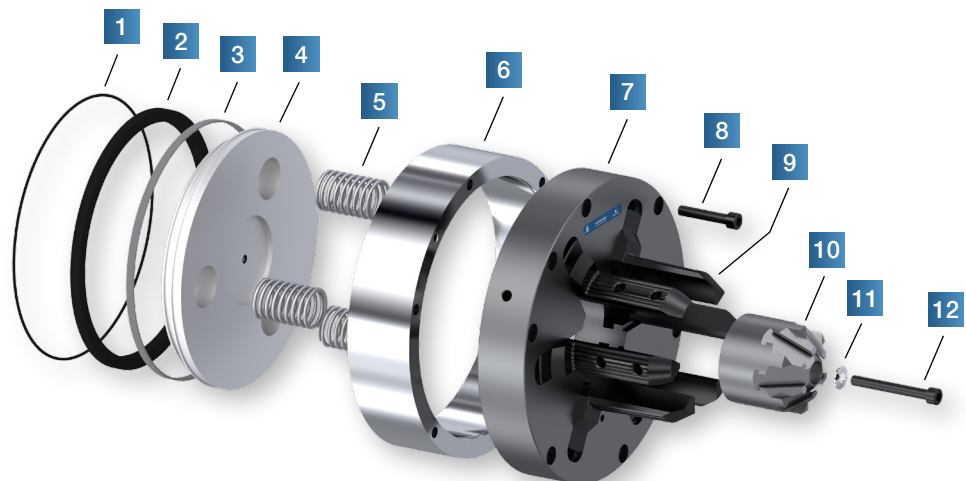
Maximum productivity thanks to a large expansion range and minimal changeover and maintenance times.



Core Chuck

Type	SDJ 20		SDJ 25		Easy-Service-Concept
Chuck Jaws type	1	2	1	2	Thanks to the <i>Easy-Service-Concept</i> , normal cleaning and maintenance work is carried out from the outside without removal of the Core Chuck from the machine.
Internal core ø mm	70-101.6	120-152.4	70-101.6	120-152.4	
Expansion range mm	69-113	117-161	69-113	117-161	
max. Load per Mandrel N	12'500	15'000	20'000	25'000	
Torque Nm	300-500	570-760	480-680	800-1060	
Operating pressure bar	6				
Bearing case mm	265		295		
Bolt circle ø mm	222		274		
Service option	Front dismantling <i>Easy-Service-Concept</i>				

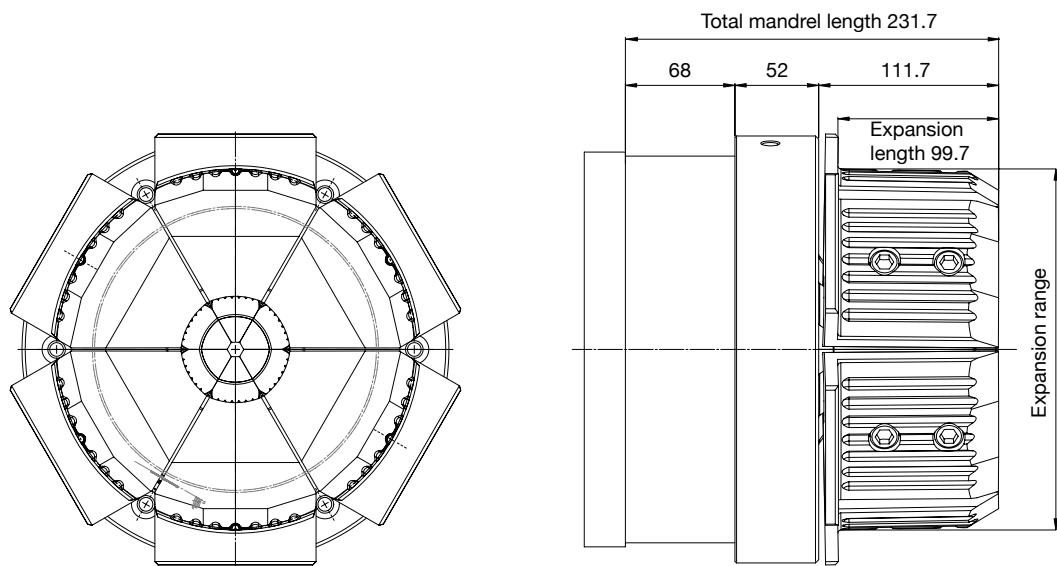
- 1 O-ring
- 2 Sealing ring
- 3 Guide band
- 4 Piston
- 5 Spring
- 6 Cylinder housing
- 7 Slot flange
- 8 Cylinder screw
- 9 Chuck jaw
- 10 Clamping Cone
- 11 Retaining washer
- 12 Cylinder screw



Chuck jaws				
				
Core material	MT 1 Steel	RP 1 Steel	MT 2 Steel	RP 2 Steel
Cardboard	x	x	x	x
Plastic	x	x	x	x
Steel	x		x	

SDJ adapter jaws

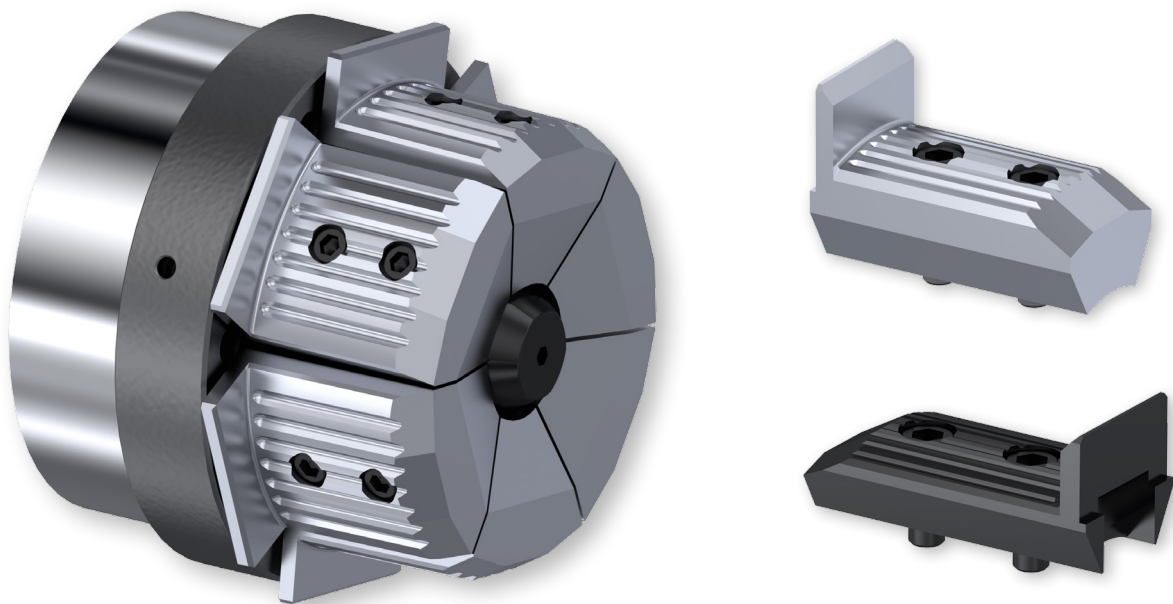
SDJ Core Chucks can be quickly and easily adapted to other core diameters by using adapter jaws. This covers a winding range of 70 mm to over 300 mm. The adaptation is carried out on the machine without disassembling the Core Chuck.



Adapter jaws

Adapter jaws for Core Chuck type 1	Core ø mm (inches)	Expansion mm
Adapter jaws set MT SDJ type 1 5-6	127-152.4 (5-6)	119-163
Adapter jaws set MT SDJ Type 1 9-10	228.6-254 (9-10)	224-268
Adapter jaws MT SDJ type 1 11-12	279.4-304.8 (11-12)	273-317

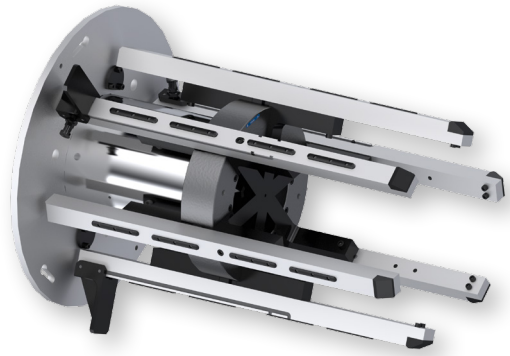
Adapter jaws for Core Chuck type 2	Core ø mm (inches)	Expansion mm
Adapter jaws set MT SDJ type 2 7-8	177.8-203.2 (7-8)	170-214
Adapter jaws set MT SDJ Type 2 9-10	228.6-254 (9-10)	224-268
Adapter jaws set MT SDJ Type 2 11-12	279.4-304.8 (11-12)	273-317



Further SDJ Core Chucks

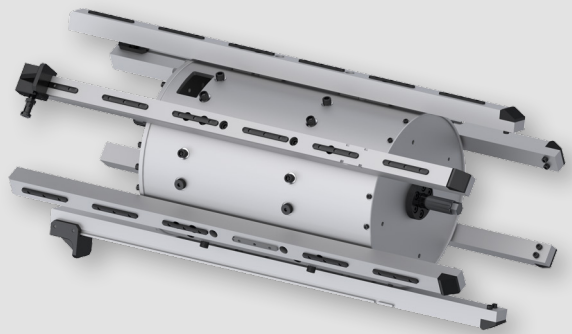
SDJ 28 Core Chuck

- High load bearing capacity
- Expansion range over 180 mm



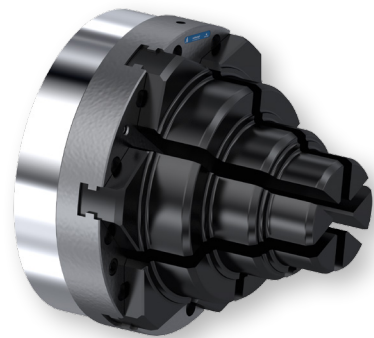
SDJ 30 Core Chuck

- Useable vertically as well as horizontally
- Expansion range of more than 180 mm

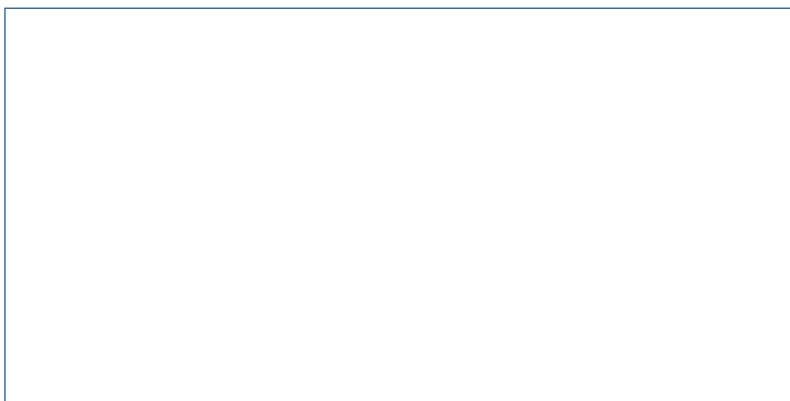


SDJ 36 Core Chuck

- Expansion range from 139 - 316 mm
- High load



Sales partner



Schlumpf AG

Aahusweg 8
6403 Küssnacht am Rigi
Switzerland

Phone +41 41 784 43 43

Fax +41 41 784 43 44

info@schlumpf-ag.com

www.schlumpf-ag.com